



Campus Planning Committee

Facilities Planning & Management

Committee Chair: Interim Provost, Eric Wilcots

May 18, 2023



Agenda

1. Welcome & Introductions

- a) University Architect Introduction

2. Old Business

- a) Approval of March 9, 2023, meeting minutes (**Action**)
- b) Update: 2023-25 Biennial Capital Budget
- c) 2025-27 Biennial Capital Budget Planning Process and Timeline

3. Announcements

- a) Provost Isbell
- b) Fall 2023 meeting dates

4. Adjournment

Peter Schlecht - University Architect



Role & Duties

- Assistant Vice Chancellor of Campus Planning & Design
- Leads:
 - Campus Planning & Landscape Architecture
 - Interior Architecture
 - Space Management Office
 - Physical Accessibility

2023-25 UW-Madison Enumerated Projects Request List

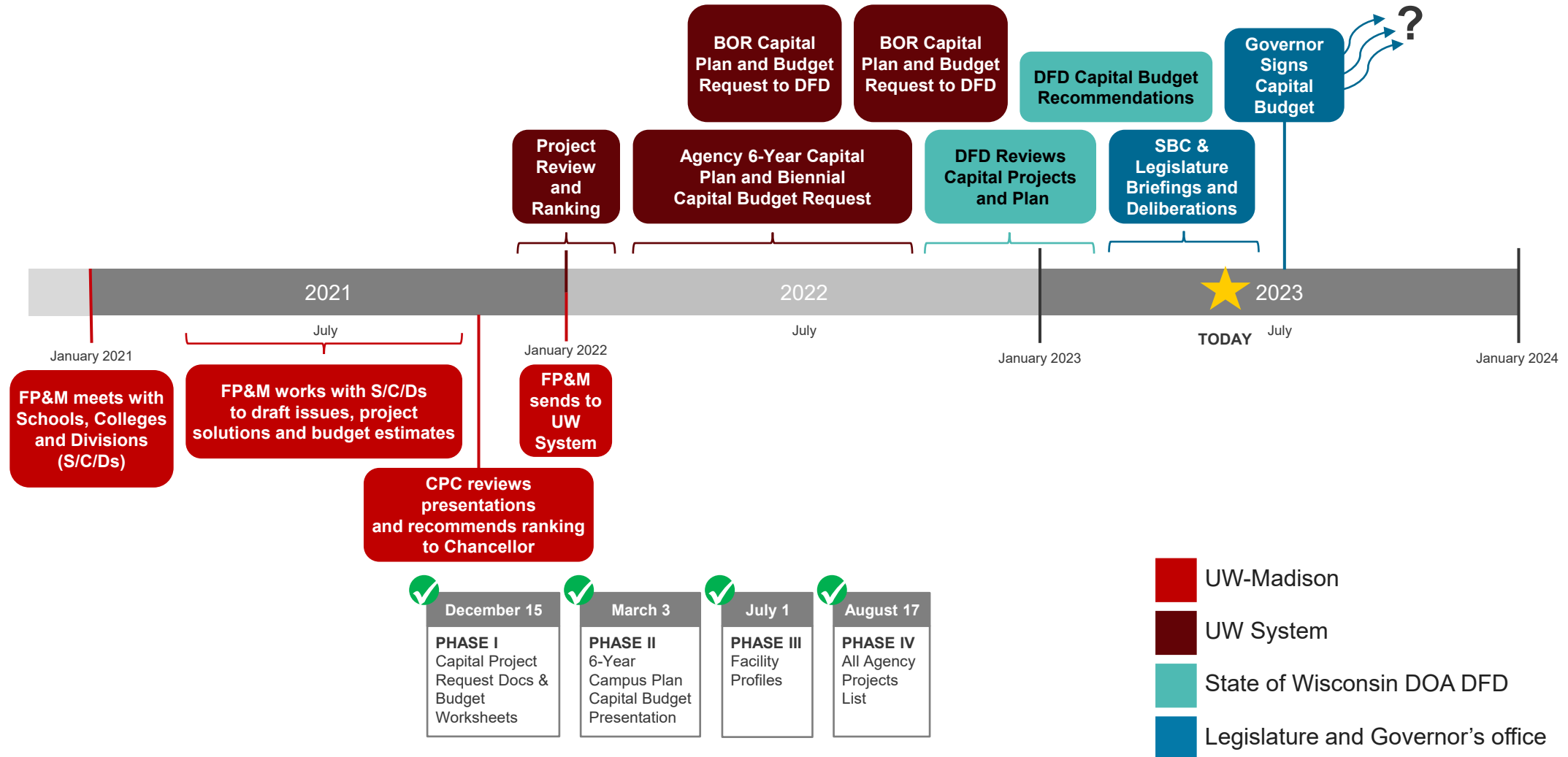
As of February 28, 2023



Rank	Project	Total Requested (\$ Million)	Governor's Recommendation (\$ Million)
1	South Central Campus Steam Utility Replacement	\$90.771 <i>(\$64.702 GFSB / \$26.069 PRSB)</i>	\$93.771 <i>(\$64.702 Cash / \$29.069 PRSB)</i>
2	Engineering Replacement Building / Computer Aided Engineering Facility	\$347.336 <i>(\$194.466 GFSB / \$150 Gift / \$2.870 BTF)</i>	\$347.336 <i>(\$197.336 Cash / \$150 Gift)</i>
3	Humanities Art Department Relocation & Consolidation	\$169.072 <i>(\$140.322 GFSB/ \$28.75 Gift)</i>	\$169.072 <i>(\$140.322 Cash / \$28.75 Gift)</i>
4	Music Hall Restoration	\$39.741 <i>(\$9.741 GFSB/ \$30 Gift)</i>	\$39.741 <i>(\$9.741 Cash / \$30 Gift)</i>
5	Kronshage-Jorns-Humphrey Residence Halls Addition & Renovations	\$79.211 <i>(\$69.211 PRSB / \$10 Cash)</i>	\$79.211 <i>(\$69.211 PRSB, \$10 PR-Cash)</i>
6	Camp Randall Sports Center Replacement	\$285.163 <i>(\$120 ex-PRSB/ \$165.163 Cash)</i>	\$285.163 <i>(\$120 ex-PRSB / \$165.163 PR-Cash)</i>
Total		\$1,011.294	\$1,014.294



2023-25 Capital Budget Timeline and Status



UW-Madison Biennial Capital Budget Planning Process & Timeline

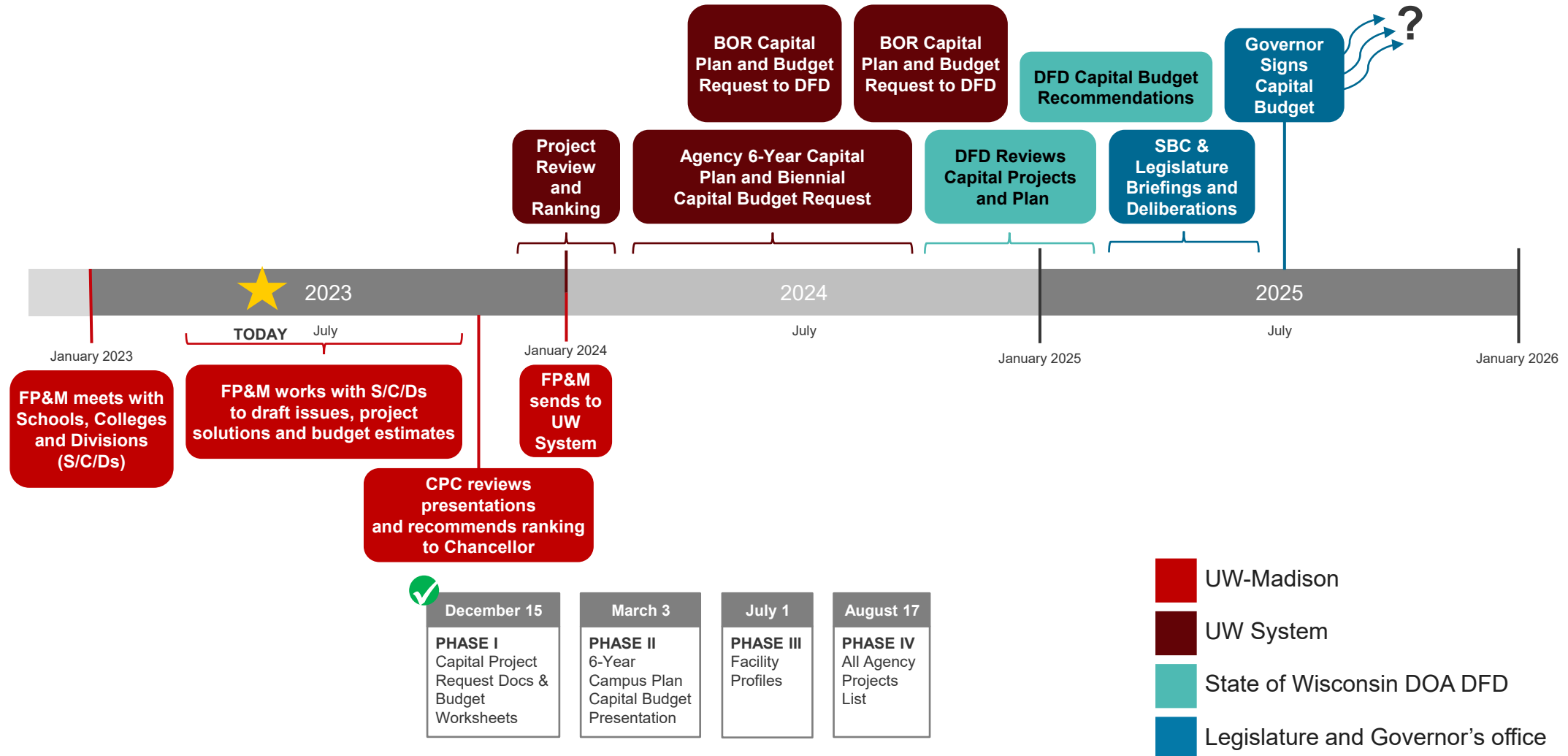
BCB 2025-27

Campus Planning Committee Meeting | May 18, 2023





2025-27 Capital Budget Timeline and Status





Process:

2025-31 Biennial Capital Budget and Six-Year Capital Development Plan

1. SCD Engagement

- Invitations sent to **31** units
 - **12** units opted to not hold a meeting
 - **11** meetings were held
 - **4** units were combined into a single SCD meeting
 - **4** units are still working to set up a meeting

2. Takeaways

- FP&M and the SCDs are appreciative of the opportunity to talk through their capital project needs
- Opportunities for learning:
 - Project funding and project type: some projects can be initiated now without waiting for the biennial capital budget process
 - Periodic engagement with an FP&M PM in the two years between the BCB process is a good way to curate a capital projects list



Planning Principles:

2025-31 Capital Budget & Six-Year Capital Development

1. Strategic alignment to optimize resources and meet campus goals

- Project supports UW-Madison 2020-2025 Strategic Framework Plan priorities
- Project supports the guiding principles of the 2020 UW-Madison Revenue Innovation Study
- Project supports 2015 Campus Master Plan
- Project Study (formerly Advanced Plan) is complete or in-progress confirming project scope, schedule and budget

2. Create adaptable, healthy, sustainable, resilient and safe facilities

- Project renovates existing space to be more adaptable for future use or creates new adaptable facilities when necessary
- Project meets UW-Madison sustainability goals
- Project addresses ecological and environmental resiliency
- Project supports campus equity, inclusion, and diversity principles

3. Maximize the use of campus facilities.

- Project reuses, reprograms, and/or renovates an existing facility
- Project removes underutilized and obsolete facilities
- Project supports UW-Madison's mission to align modern technology with research and pedagogy needs in adaptable facilities
- Project supports space utilization efficiency

4. Reduce deferred maintenance & create easily maintainable facilities

- Project designed to reduce overall maintenance program costs
- Project recapitalizes significant building systems
- Project addresses issues as identified with a low Facility Condition Assessment
- Project addresses existing safety or code issues

5. Overall University Support for the Project



Planning Principles (Rubric):

2025-31 Capital Budget Review & Ranking Criteria

	Points	Wt.	TOTAL
1. Strategic alignment to optimize resources A. Project supports UW-Madison 2020-2025 Strategic Framework Plan priorities B. Project supports the guiding principles of the 2020 UW-Madison Revenue Innovation Study C. Project supports 2015 Campus Master Plan D. Project Study (formerly Advanced Plan) is complete or in-progress confirming project scope, schedule and budget	5 5 5 5	40	800
2. Create adaptable, healthy, sustainable, resilient & safe facilities A. Project renovates existing space to be more adaptable for future use or creates new adaptable facilities when necessary B. Project meets UW-Madison sustainability goals C. Project addresses ecological and environmental resiliency D. Project supports campus equity, inclusion, and diversity principles	5 5 5 5	20	400
3. Maximize the use of campus facilities A. Project reuses, reprograms, and/or renovates an existing facility B. Project removes underutilized and obsolete facilities C. Project supports UW-Madison's mission to align modern technology with research and pedagogy needs in adaptable facilities D. Project supports space utilization efficiency	5 5 5 5	20	400
4. Reduce deferred maintenance & create easily maintainable facilities A. Project designed to reduce overall maintenance program costs B. Project recapitalizes significant building systems C. Project addresses issues as identified with a low Facility Condition Assessment D. Project addresses existing safety or code issues	5 5 5 5	20	400
5. Overall University support for the project			
		100%	2000



Timeline and Milestones:

2025-27 Biennial Capital Budget and 2025-31 Six-Year Capital Development Planning

Date(s)	Milestone Description	Done
February 16, 2023	FP&M presents to the CPC: Draft Planning Principles and proposed review process	X
March 2023	SCDs receive list of existing projects and description of BCB process	X
March-May 2023	FP&M meets with SCDs, if needed, to review process, current projects, and schedule	
June 9, 2023	<ul style="list-style-type: none">One-pager form sent to SCDs for all 2025-27 projects (first biennia only)FP&M sends updated projects and next steps to the SCDsFP&M sends Planning Principles rubric and Planning Principles supporting documentation	
July 28, 2023	One-pagers due to FP&M	
September 2023	<ul style="list-style-type: none">Announcement of the proposed CPC presentation schedule (2025-27 biennia projects only)CPC opportunity to suggest additional projects for presentationsSCDs submit draft CPC presentations to FP&M for concurrence (end of September)	
September 21, 2023	<ul style="list-style-type: none">SCD presentations to CPC (begin)FP&M recommends the 2025-27 biennial capital budget and the 2025-31 six-year plan to the CPC	
November 2, 2023	HOLD: SCD presentations to CPC (continue)	
November 16, 2023	<ul style="list-style-type: none">SCD presentations to CPC (completion)Potential CPC ranking meetingCPC votes on the 2025-27 biennial capital budget and the 2025-31 six-year plan	
November 30, 2023	HOLD: CPC ranking meeting	
December	FP&M submits its 2025-27 biennial capital budget and then 2025-31 six-year plan to UW System	

Fillable One-Pager

SCD OVERVIEW/DATA

- Brief overview related to program(s), trends, growth/decline, etc.

PROJECT TITLE

- Name of project

WHAT IS THE PROJECT?

- Description, size, information, etc.

WHY IS IT NEEDED?

- Programmatic, enrollment trends, faculty/staff trends, quality, etc.

HOW DOES THIS MEET UW-MADISON'S STRATEGIC PRIORITIES?

- Based on 2020-2025 UW-Madison Strategic Framework

WHAT IS THE BUSINESS CASE FOR THE PROJECT?

- How do the benefits outweigh the costs and why it is necessary?

ANTICIPATED DELIVERY METHOD FOR THE PROJECT?

- Enumeration, Public Private Partnership, Design/Build, etc.

ROUGH ORDER MAGNITUDE OF PROJECT COST?

- Information related to the funding type required (GFSB, PRSB, G/G, etc.)

ANTICIPATED TIMING/SCHEDULE OF THE PROJECT?

- Recommended biennium for enumeration/delivery

ADVANCED PLANNING IS COMPLETE FOR THE PROJECT?

- If not complete, when is it anticipated to start?

University of Wisconsin-Madison

2025-27 Biennial Capital Budget: Major Project Request Overview

BCB 2025-27



Project Name (Building Name, School/College/Division, Brief Description)

Include 1-2 images to support this Major Project Request Overview. (Images should be no larger than 2 inches tall)



Project Details

Project Name	Building Name, S/C/D, Brief Description	School/College/Div. (SCD)	XX
Building Number/ID	Building Number if applicable (#####)	SCD Contact	XX
Delivery Type	DFD (State) or UW Managed	SCD Contact Information	XX
Project Type	New Construction / Utility / Reno. / Add.	Advanced Planning Complete	Yes, date completed / No / In progress
Anticipated Project Cost	Rough Order of Magnitude (\$)	Anticipated Funding by Source	GFSB / PRSB / PR-Cash / Gift / Grant
Previous BCB Submittal	Previously submitted, what biennium(s)?	Project Size	Square footage type (reuse or new)

Project Description

Describe the project in 1-3 sentences addressing the following at a high level: summary of the project scope including estimated square footage, location, and changes to existing physical space.

Project Need

Why is the project needed? What is the programmatic need, enrollment trends, faculty/staff trends, ability to deliver on needs of S/C/D, etc. Include a statement about impact to the program/entity if the project is not implemented.

Strategic Priorities

How does this project align with (1) the strategic priorities of UW-Madison and with (2) the strategic priorities of the SCD? Has the SCD completed a Facilities Master Plan or other facility planning?

Project Alignment with Planning Principles

Address how your project aligns with the planning principles in a 1-paragraph max narrative. See the attached 2025-31 Capital Planning Principles for evaluation criteria.

Additional Insights to Support Project Review

Please comment on issues not currently addressed. Will the project enable other institutional needs? Will the project assist in creating innovative revenue production or new teaching/research methods not currently available? What is the status or capacity for fundraising all or part of the project?

Charles Lee Isbell Jr. – UW-Madison Provost



- Beginning August 1, 2023
- Chair of the Campus Planning Committee
- The Provost oversees and works closely with the Deans and the Vice Provosts and collaborates with campus leadership and shared governance to strengthen and support UW–Madison’s academic mission of teaching and research, as well as public service.
- The Provost’s responsibilities include overseeing 13 schools and colleges as well as a number of key areas such as enrollment management, teaching and learning, outreach, the Division of Extension, Wisconsin Public Media, Libraries and International Affairs, among others.



Announcements

Date	Tentative Agenda Topic(s)	Location
September 21, 2023	Indigenous Water Mural FP&M BCB Presentation List Recommendations	Hybrid In-Person + Webex Bascom Hall Room 260
October 19, 2023	Presentations	Hybrid In-Person + Webex Bascom Hall Room 260
November 2, 2023	<i>HOLD: Presentations if Required</i>	<i>Hybrid In-Person + Webex Bascom Hall Room 260</i>
November 16, 2023	Presentations + Ranking	Hybrid In-Person + Webex Bascom Hall Room 260
November 30, 2023	<i>HOLD: Presentations if Required</i>	<i>Hybrid In-Person + Webex Bascom Hall Room 260</i>
December 14, 2023	Signage and Wayfinding Design Guidelines	Hybrid In-Person + Webex Bascom Hall Room 260



ADJOURN

Campus Planning Committee

May 18, 2023