



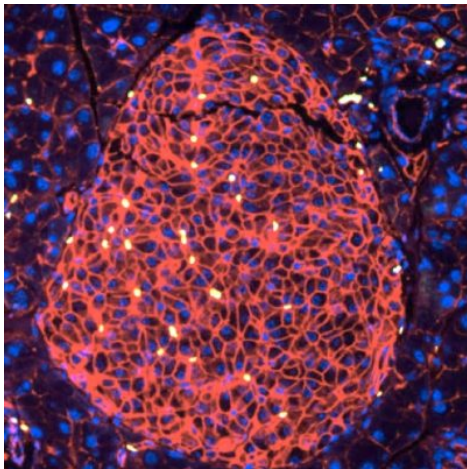
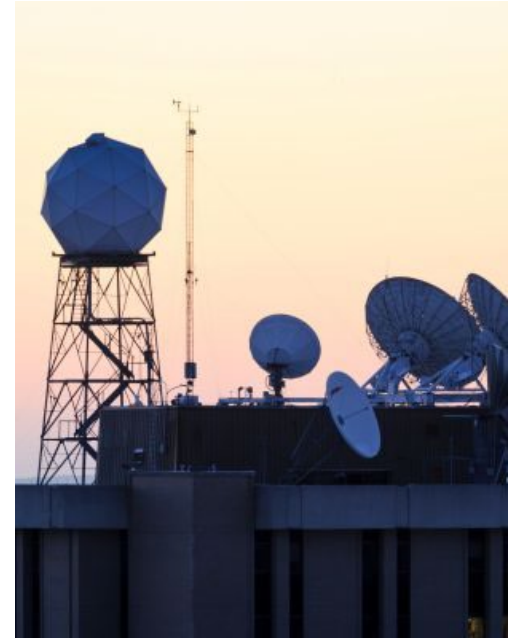
Vice Chancellor for Research and Graduate Education (VCRGE) 2023-29 Six-Year Capital Plan Request

Steve Ackerman

Vice Chancellor for Research and Graduate Education
Campus Planning Committee Meeting
November 18, 2021

OVCERGE Overview

- Mission: To foster outstanding research at UW–Madison and improve the competitiveness of our faculty, staff, and students as they pursue their research programs.
- Long history of multidisciplinary research at UW–Madison, dating back over 100 years. More than \$1.3 billion in annual research expenditures.



- 16 multidisciplinary research centers include more than 2,000 faculty, students, post-docs, and staff from all 4 divisions.
- Facilities stretch across the university, and conditions vary greatly—from state-of-the-art to structurally unsound and/or unfit for their research, educational, or outreach uses.

UW–Madison High Containment Core Facility

- **Need**

- Lack of sufficient facilities for research on emerging and re-emerging pathogens
- Existing biosafety level (BSL) 3 spaces managed by individual units
- Some are structurally incomplete, underfunded, or used for BSL2 work
- Some researchers were unable to transition to comprehensive SARS-CoV-2 studies, many partnered to conduct research off campus

- **Supporting Programmatic Needs and University Priorities**

- Excellence in Research & Scholarship
- Living the Wisconsin Idea

- **Creation of Revenue Opportunities**

- Increasing sponsor investments in new potentially pandemic pathogens
- Improved competitiveness for external funding

- **Impact of Status Quo**

- Delays in currently funded projects
- Missed funding opportunities
- Reduced ability to retain top faculty in a high-impact research areas

UW–Madison High Containment Core Facility

- **Preliminary Recommendations**

- 6+ BSL3 labs (200–300 square feet each) designed to meet Tier 1 select agent requirements
- 3+ ABSL3 (animal) rooms with procedure space
- Facilities allowing personnel to shower in/out
- Adjacent BSL2 labs for related research activities not requiring BSL3 space

- **Location TBD, Options:**

- New construction at University Research Park
- Identify and remodel existing space

- **Budget**

- Roughly \$1,000 per gross square foot, size TBD
- Recommend 2027+
- Gift/Grant funding



Consolidated WI National Primate Research Facility

- **Need**

- Operate in 5 buildings across campus and outside of Madison
 - Decentralization creates inefficiencies
- Aging buildings on Capitol Court
- Existing facilities at capacity
 - 2 current construction grants to expand existing space are modest compared to need
 - Square footage needed per animal is increasing
- Inadequate animal biosafety level 3 (ABSL3) housing & procedure space
- More flexible research, housing, and procedural space needed



Consolidated WI National Primate Research Facility

- **Supporting Programmatic Needs and University Priorities**
 - Excellence in Research & Scholarship
 - Living the Wisconsin Idea
- **Creation of Revenue Opportunities**
 - Increasing sponsor investments in new potentially pandemic pathogens
 - Anticipate continued growth over next 10+ years
 - Key areas: infectious disease, neuroscience, reproductive & regenerative medicine, and energy metabolism & chronic disease
 - Improved competitiveness for external funding
- **Impact of Status Quo**
 - Missed funding opportunities
 - Hindered ability to participate in national efforts to combat infectious diseases—nonhuman primate model key to continued progress
 - Growing costs associated with maintaining aging infrastructure
 - Failure to attract/retain researchers, staff, students, employees-in-training
- **Budget**
 - TBD
 - Recommend 2027+
 - Anticipate gift-grant funding

Connecting Strategic Plan to a Facilities Plan

Strategic Objectives

UW Strategic Priorities:

1. Excellence in research & scholarship
2. Living the Wisconsin Idea

OVCRGE Facilities Priorities:

1. Optimize UW's research infrastructure and grow its research portfolio
2. Support faculty recruitment & retention
3. Design spaces with flexibility to meet future needs

Major Project Priorities 2023-29

1. High Containment Core Facility

- Size TBD
- ~\$1,000/SF
- G/G funding
- 2027+

2. Consolidated Primate Research Center

- Size and budget TBD
- G/G funding
- 2027+



Questions?

