



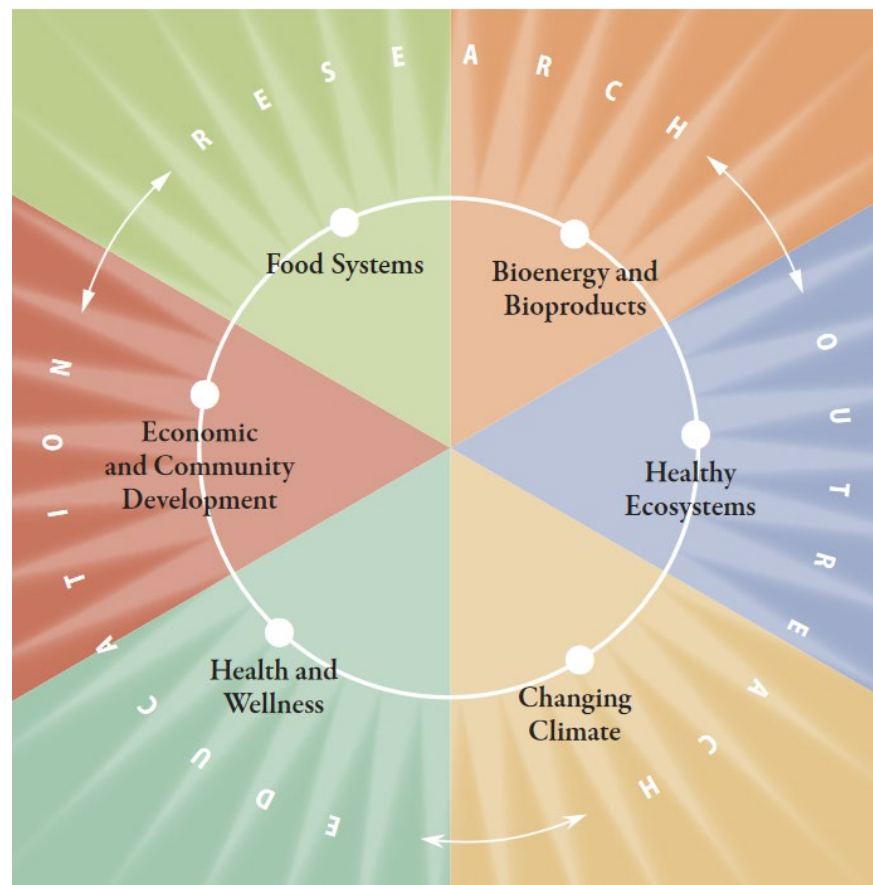
# **College of Agriculture & Life Sciences**

## **2023-29 Six-Year Capital Plan Request**

**Sr. Assoc. Dean Mark Rickenbach,  
Campus Planning Committee Meeting  
September 30, 2021**

# CALS Overview

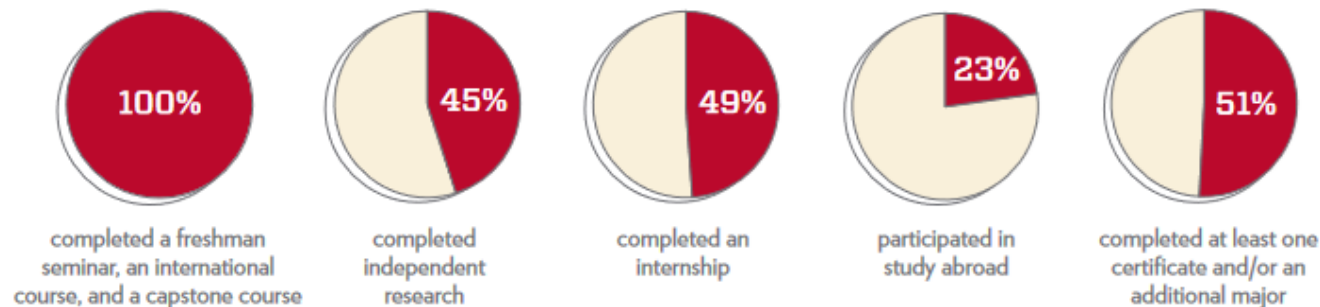
- 16 academic departments
- 13 centers
- 230 faculty FTE
- 731 staff FTE
- Ranked 8<sup>th</sup> in QS World University Rankings (Ag & Forestry)



## Instruction

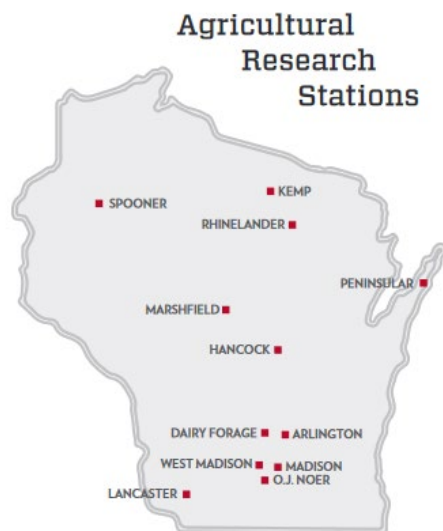
- Undergraduates enrolled: 2,892
- Undergraduate majors: 23
- Graduate students enrolled: 913
- Graduate program participation: 27

CALS embraces high-impact, hands-on, practical experiences for undergraduates:

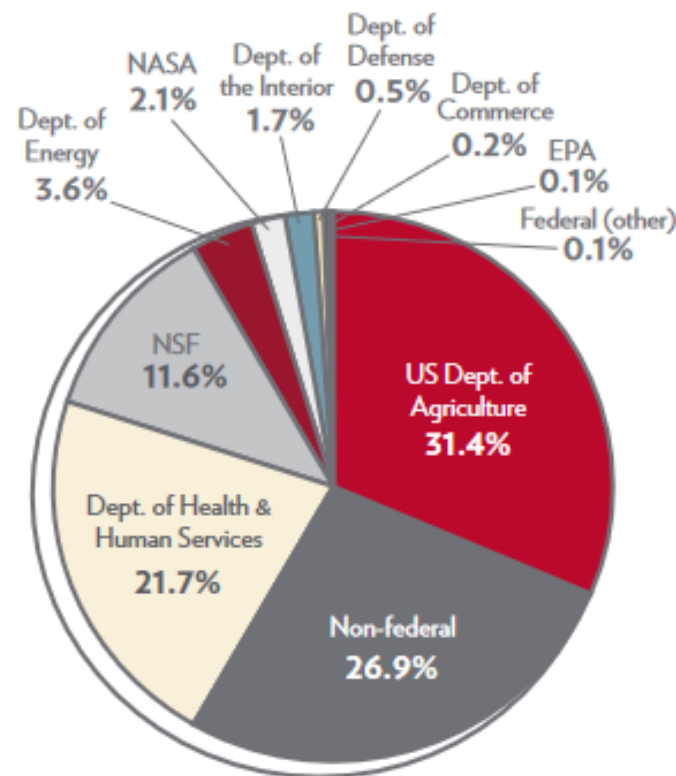


# CALS Overview

- Total research funding: \$95.8M
- Invention disclosures: 44



## Research Funding 2019-2020



## Plant sciences in CALS

- 9 departments
- 4 centers
- 12 research stations
- Plant Breeding and Plant Genetics grad program

- WI #1 in cranberry production
- WI #3 in potato production
- “America’s Dairyland” includes forages

# USDA-ARS Plant Germplasm Research Facility

- Project would be federally funded (\$39.7M)
- 51,300 GSF, including 3 new greenhouses
- Supports both USDAARS Vegetable Crops Research unit and UW plant breeders
- Cold storage rooms for tubers, roots and seeds to maintain viability
- New home for USDA Potato Genebank



## ***New facility would replace:***

- Carrot & Beet Lab
- Horticulture Annex Building
- Tuber & Root storage facility at Arlington ARS





# Marshfield Agricultural Research Station New Headquarters Building



Current Headquarters

- Limited office space
- No conference or meeting space
- No employee break space
- No water in winter- line must be drained or it will freeze

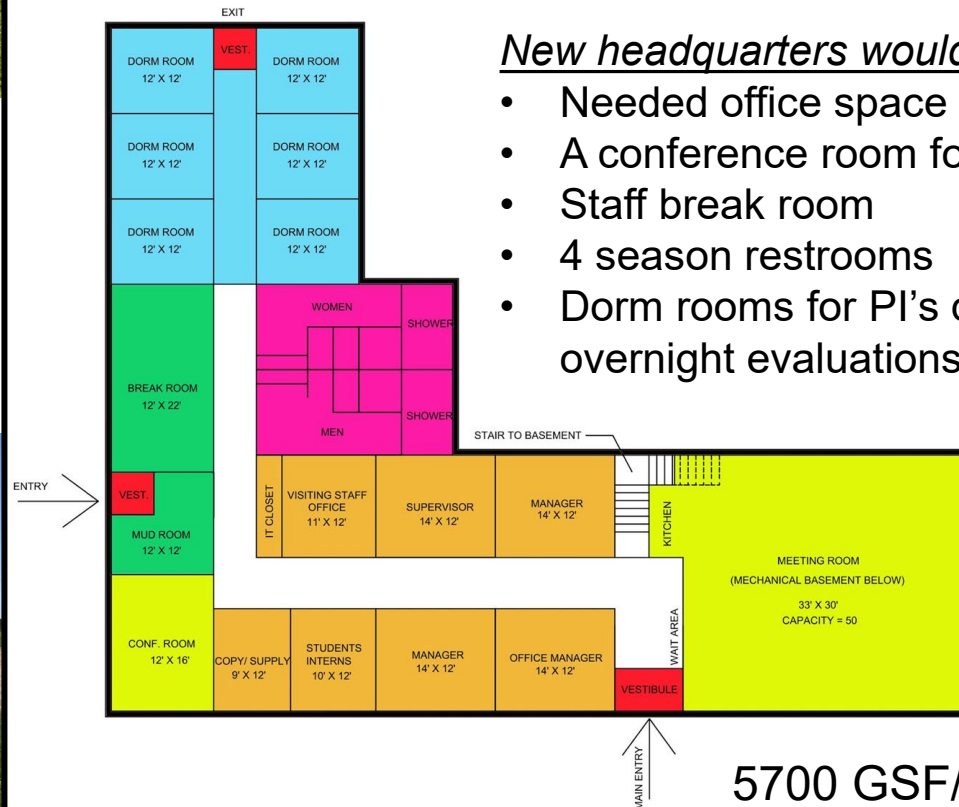


## Station is currently supporting:

- 30 active animal research projects
- 54 active field research studies
- 125 lactating dairy cows
- Raising 490 heifers for CALS research

## New headquarters would provide:

- Needed office space
- A conference room for 50
- Staff break room
- 4 season restrooms
- Dorm rooms for PI's doing overnight evaluations

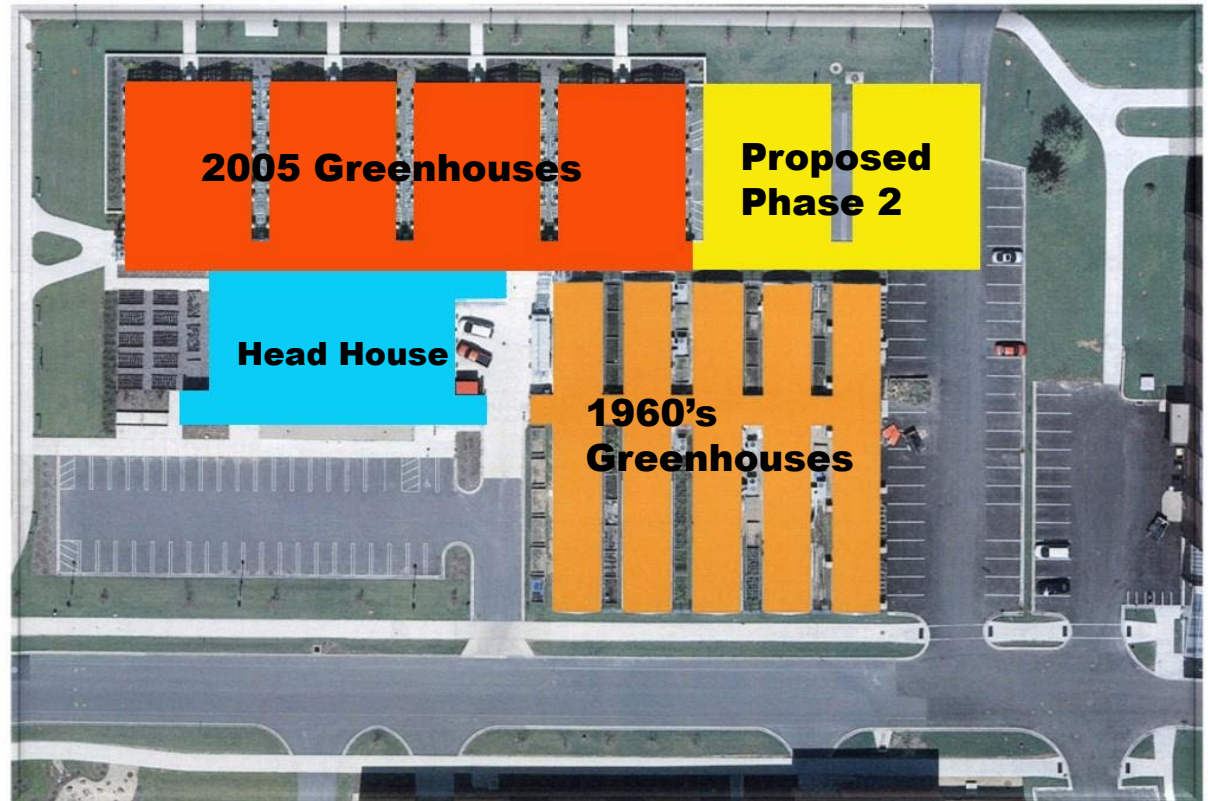


5700 GSF/ \$5M

# Walnut Street Greenhouses Phase 2

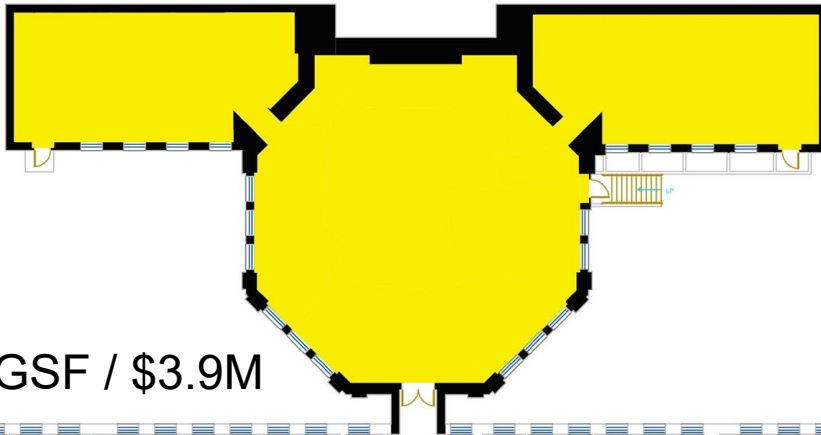
- 2 new high quality research wings
- 16 added greenhouses
- Would replace some of the space lost due to the closing of the Biotron
- Approximately 9,800 GSF of new space
- No demolition of 1960's houses
- Utility spine from 2005 project would be extended
- \$8.5M
- Currently used by 14 departments/programs
- 90-120 projects currently underway
- 45-50 faculty using the facility at any given time
- Used by 150-170 post docs/undergrads/grad students

*Typical 2005  
greenhouse*

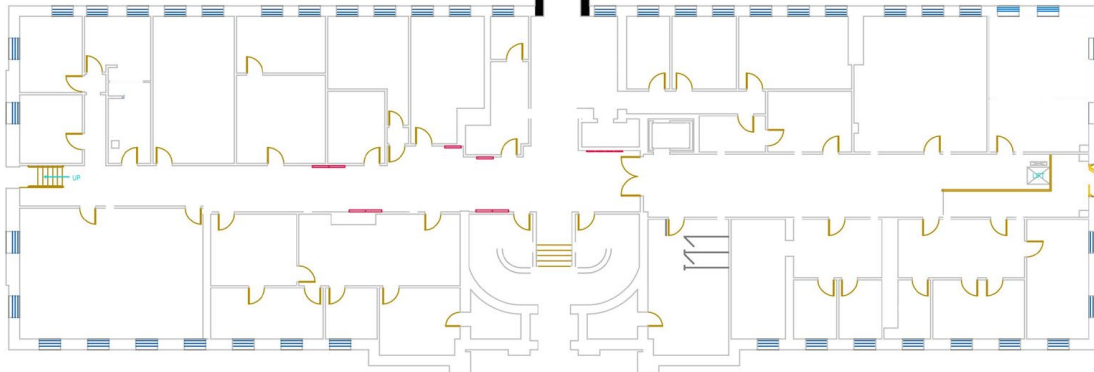


# Agricultural Hall Student Services Center

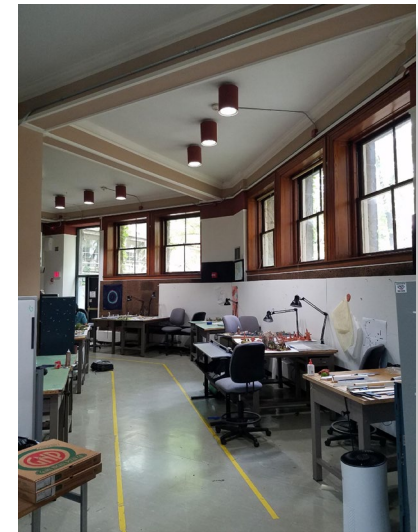
- Would provide space for the more than 20 student organizations without designated space
- New space for career services & corporate recruiter interviews
- Space for alumni mentoring activities & international study programs



5,400 GSF / \$3.9M



Project would renovate the basement level of Agricultural Hall currently occupied by Landscape Architecture



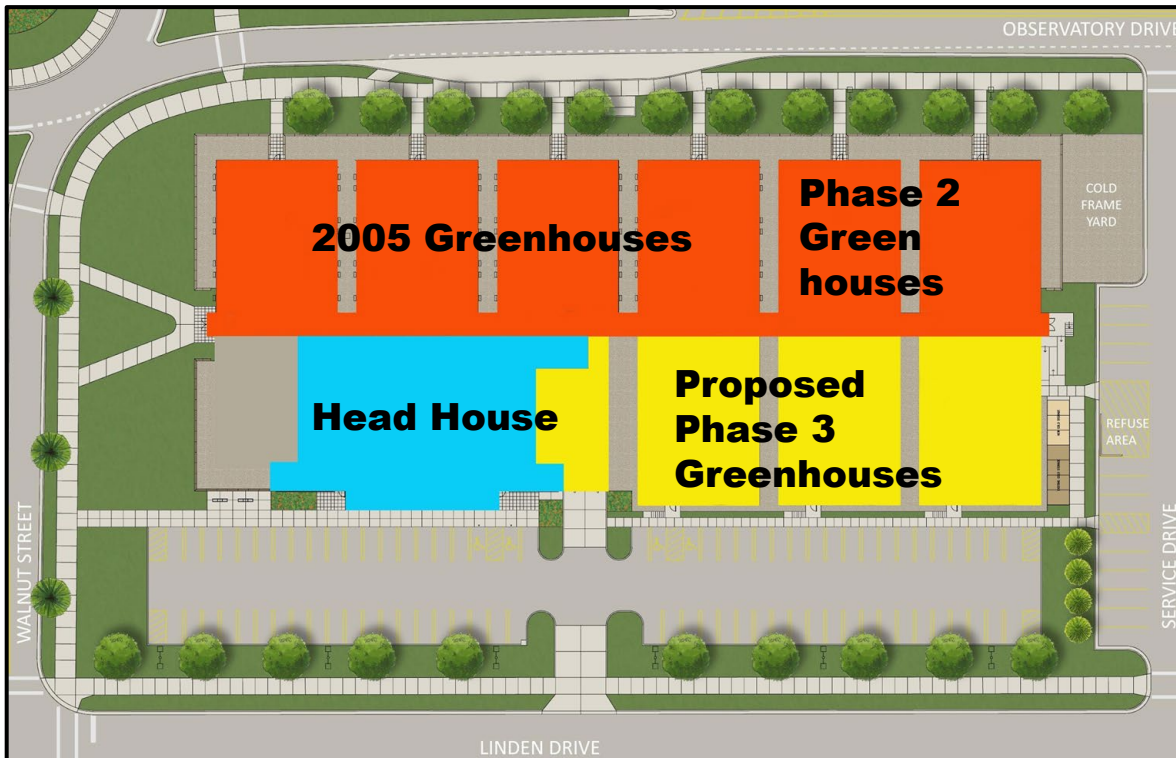


# Walnut Street Greenhouses Phase 3



*View from the Southeast*

- 3 new high quality research wings
- 24 greenhouses added (13,680 GSF)
- Greenhouses would provide precise humidity, temperature and lighting controls
- Structures would be 3 feet taller to allow for taller crop studies (corn)
- \$19.8M



- Existing wood frame greenhouses would be demolished
- All greenhouses would be out of the shadow of the Cogen plant
- New parking lot on south side to replace parking lost to new wings
- Expanded loading dock and storage included



# Connecting Strategic Plan to a Facilities Plan

## Strategic Objectives

1. Direct instructional resources toward activities and policies that will meet growing need and demand for specific educational programs while developing innovative methods of delivering knowledge and advancing student learning.
2. Create educational offerings that respond to emerging scientific developments and opportunities as well as student needs.
3. Support pursuit of the basic scientific knowledge that will enable advances in theme areas.
4. Provide incentives and lower barriers for research projects addressing complex challenges, including interdisciplinary projects and those bridging basic and applied disciplines.
5. Support processes that enable greater collaboration across departments, centers and programs.
6. Collaborate to maximize effectiveness and efficiency of administrative services.
7. Partner strategically across the campus, around the state and beyond in the pursuit of our mission, vision, themes and strategies.

## Major Project Priorities 2023-29

1. **USDA-ARS Plant Germplasm Research Facility**
  - 52,300 GSF
  - \$39.7M
  - Federal appropriation
2. **Marshfield ARS New Headquarters Building**
  - 5,77 GSF
  - \$4.02M
  - Gift/grant
  - Proposed Biennium: 2023-25
3. **Walnut Street Greenhouses Phase 2**
  - 9800 GSF
  - \$8.51M
  - Proposed Biennium: 2025-27
4. **Agricultural Hall student service center (remodel)**
  - 5400 GSF
  - \$3.9M
  - Proposed Biennium: 2027-29
5. **Walnut Street Greenhouses Phase 3**
  - 13800 GSF
  - \$19.86M
  - Proposed Biennium: 2029-31



Questions?

